

# Dynamic

Request a quote online at [www.sourceonex.com](http://www.sourceonex.com)



First Quarter | 2013



A rendering of the Devaney Center's redesign showcases what the facility will look like after completion.



Design Engineer Chad Essink helped turn the arches into a reality.

A collaborative effort with the University of Nebraska-Lincoln's Devaney Center proves that not even the sky is the limit for SourceOne.

As the Husker men's and women's basketball programs prepare to move to the new Pinnacle Bank Arena for the 2013-2014 season, its volleyball team is making the transition to the Devaney Center.

"UNL wants the volleyball team to bring the appearance and feel of the NU Coliseum with it to Devaney," said Design Engineer Chad Essink.

To help recreate the coliseum's intimate atmosphere, SourceOne will design, fabricate and powder coat six artificial arches that will run the length of the Devaney Center ceiling.

Each arch, stretching 300 feet in length, is split into 30 ten-foot sections. In February, SourceOne hung sample sections of the lightweight, aluminum arches.

"The project has been challenging because it's so large in scale," Essink said. "The test run gave us a better picture of what we'll be tackling later this year when we install the arches."

President Elmer Wessel sees the project as just another example of SourceOne's ability to take on any unique project that comes its way.

"With SourceOne's diverse capabilities, we were able to help UNL with its truss design and build needs," he said. "The trusses will have a large impact on how the renovated Devaney Center

Continued on page 2



#### Our Core Competencies

SourceOne best serves those customers who seek to maximize the benefit of outsourcing by engaging SourceOne at the earliest possible time in the planning, design and implementation of automation, tooling and production projects that require the widest range of competencies. These competencies include, but are not limited to, product and tooling

design and construction, machining, fabrication, powder coating, assembly, packaging, warehousing and order fulfillment.

While SourceOne is prepared to provide services and products that take advantage of single or limited numbers of manufacturing capabilities, we encourage customers to think of SourceOne as Your One Source Manufacturing Partner.

# SourceOne lends expertise to aerator redesign



PLUGR's former PL800 Pro 30" Aerator featured a tubular structure.

When PLUGR needed help streamlining its walk-behind aerator product line, it trusted SourceOne to tackle the challenge.

Design Engineer Chad Essink redesigned the line of turf aerators to enhance productivity and functionality through a unibody construction. The improvements increase user satisfaction, ease of operation and maintenance, as well as reduce overall manufacturing costs.

"We took their prototype and turned it into something we could easily and cost-effectively fabricate," Essink said. "Our goal was to simplify the design and improve the product's function and reliability."

The new design replaces the previous tubular structure with a simple laser cut sheet metal body that has an easy to remove cover for ease of maintenance. One model also features adjustable speed control, an industry first, that allows the user to choose the best option for the terrain.

"This project is a great example of SourceOne's ability to turn a customer's rough prototype into a manufacturable product," Essink said.

Nate Antons, PLUGR's National Sales Manager, was pleased with the end result and the redesign process.

"We really like the way the entire product line features a similar look and style," he said. "It looks streamlined, and one product design flows well to the next."

Antons also appreciates the knowledge and experience SourceOne employees brought to the redesign.

"SourceOne was detail-oriented throughout the entire design process," he said. "They kept our customer in mind the entire time, which is a quality we really value."

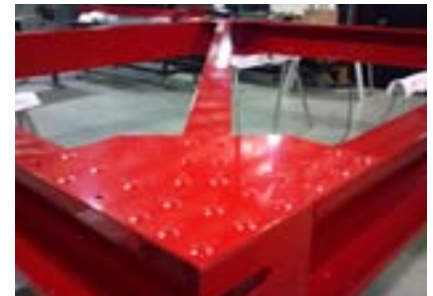


PLUGR's redesigned line of walk-behind aerators features a sleek and compact design that increases user functionality and is more cost-effective to manufacture.

## SourceOne reaches NEW HEIGHTS

Continued from page 1  
looks, and we are proud of our long-term relationship with UNL. Our engineering staff has done a great job designing all facets of this project, including design, build, assembly and install."

The project is expected to be completed this summer. In addition to UNL's volleyball team, the Devaney Center also will house the university's wrestling and gymnastics teams.



Each arch stretches 300 feet in length.



**Elmer Wessel**  
President  
ewessel@sourceonex.com  
Ext. 3142



**Chris Reed**  
Division Manager  
creed@sourceonex.com  
Ext. 3211



**Jim Starkey**  
Sales Manager  
sales@sourceonex.com  
Ext. 3139



**Jack Gleason, P.E.**  
Engineering Manager  
jgleason@sourceonex.com  
Ext. 3134



**Matt Sahs**  
Quoting Coordinator  
msahs@sourceonex.com  
Ext. 3212



**Eric Slezak**  
Automation & Tooling  
Superintendent  
eslezak@sourceonex.com  
Ext. 3202



# Employees keep safety No. 1

Working safely has become second nature for SourceOne employees, an ideology evidenced by the team's impressive record. Since 2010, SourceOne has continued to see a downward trend in the number of reportable injuries, recording only a single incident in 2012.

The company boasts an experience modification rate of .93 for 2012 and 2013. According to the Safety Management Group, EMR is a number used by insurance companies to gauge past cost of injuries and future chances of risk; the lower the EMR, the lower worker compensation insurance premiums will be. An EMR of 1.0 is considered to be the industry average.

Sara Flanagan, Safety Assistant, believes safety and production go hand in hand.

"When employees are working safely, it leads to improved morale, which in turn leads to better overall productivity and higher quality products," she said.

A workplace injury affects more than just the employee involved. It also means lost



Sara Flanagan, Safety Assistant

productivity due to time away from work recuperating and doctor appointments. Additionally, injured employees typically are unable to work as efficiently as their uninjured counterparts.

To keep its safety record on track, SourceOne employs a variety of tactics.

Bi-monthly department inspections ensure employees wear proper personal protective equipment, operate equipment safely, and work areas are kept clean and free of electrical hazards. A sample section of employees are asked safety questions, such as where fire extinguishers are located. Consecutive inspections with a grade of more than 90 percent are eligible for department-wide awards.

In addition, if SourceOne achieves one calendar quarter without an OSHA reportable injury, each employee receives a \$25 gift card. In 2012, employees received \$25 gift cards for three of the four quarters. Employees received an additional \$25 gift card at SourceOne's annual holiday luncheon in thanks for achieving an all-time record low of worker compensation medical costs in 2012.

Employees also have the opportunity to win extra cash through Safety Bingo. A bingo ball is drawn each day without an injury until one lucky employee wins.

As of March 1, SourceOne was on track to achieve zero reportable injuries for the year.



Product Engineer Ross Young is awarded the SourceOne Safety Star Award. Recipients of this peer-nominated honor demonstrate exceptional safety habits, go above and beyond to improve safety and promote good safety habits.

President Elmer Wessel believes this is a goal his team can accomplish.

"We have great employees at SourceOne who put safety first in everything they do," he said. "With a dedicated effort and a lot of teamwork, we can maintain a safe work environment and reach our ultimate goal of no injuries."



## Casburn shines at SourceOne

Project Coordinator Kathy Casburn was honored as the SourceOne Employee of the Year. Recipients of this award are recognized for their dedication to SourceOne and its customers and their ability to be team players.

Casburn joined SourceOne July 11, 2008. As the project coordinator for powder coating, it is

her responsibility to schedule powder coating jobs; oversee billing, sales and powder inventory; and provide exceptional customer service.

"I was very surprised to receive the award," she said. "I know there are a lot of other hardworking, dedicated people at SourceOne who also deserved this award. It means a lot to me that I was chosen."



**Harley Schuerman**  
Production Superintendent  
hschuerman@sourceonex.com  
Ext. 3302

**Jeff Bockoven**  
Quality Assurance  
jbockoven@sourceonex.com  
Ext. 3120

**Dee Murray**  
Customer Service  
dmurray@sourceonex.com  
Ext. 3147

**Kathy Casburn**  
Project Coordinator  
kcasburn@sourceonex.com  
Ext. 3166

**Tim Temme**  
Project Coordinator  
ttemme@sourceonex.com  
Ext. 3215

**Pat Miller**  
Project Coordinator  
pmiller@sourceonex.com  
Ext. 3111

# SOURCEONE

1030 SW 6th Street  
Lincoln, NE 68522-1327

PRSRRT STD  
US Postage  
PAID  
MAIL U.S.A.

Published especially for:



## CAPABILITIES & CORE COMPETENCIES

- **Engineering Services**
  - Design & Prototyping
  - Process Engineering
  - In-Plant Consultation
  - Rebuilding of Machines
  - Specialty Machine Build
  - Plant Automation
- **Sheet Metal Fabrication**
  - Laser Cutting
  - Punching
  - Bending & Tube Bending
  - Pin Insertion
- **Machining**
  - CNC & Tool Room
- **Welding**
  - Induction
  - Resistance
  - Robotic
  - TIG & MIG
  - Pressure Vessel
- **Powder Coating and Painting**
  - Automated Line
  - Batch Booth
  - Sandblasting
  - Any Size or Volume
  - Liquid Paint Booth
- **Added Services**
  - Assembly & Packaging
  - Warehousing & Shipping
- **Specialized Services**
  - Artistic Fabrication
  - Dedicated Manufacturing Cells
  - DuPont® Star Coater Certified Powder
  - Custom Electrodes
  - Complete Product Manufacturing
  - ASME Certified Pressure Vessel Welding
  - Maintenance Machine Work & Repair

# Thanks for your service

SourceOne and its sister companies thanked employees for their military service during the annual Veterans Day Luncheon on November 8. Employees in attendance included, back row, from left, Wendell Victor, Fred Hall, Michael Calhoun, Tim Temme, Josh Kiene, Andre Harris, Larry Ericson and Luke Foote; front row, from left, Ralph Harris, John Bishop, Roger Frost, Ryan Buck, Mark Francis and Corey Neumeister. SourceOne has a long history of supporting its employees in the service and received the Patriotic Employer Award in 2010.



Call us at  
888-418-7547  
to request our  
new brochure.



←  
*Plant  
video  
tour*



←  
*Machine  
build  
video*

### VISION STATEMENT

SourceOne is an innovative industry leader who responds rapidly to customer needs with partnership, loyalty, technology, and a focus on excellence.

**Request a quote**  
online at [www.sourceonex.com](http://www.sourceonex.com)  
or email [quotes@sourceonex.com](mailto:quotes@sourceonex.com).